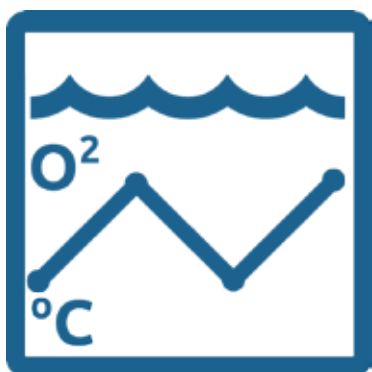


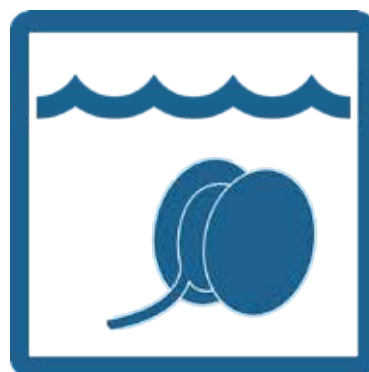


# JT electric

Innovative Solutions for the Aquaculture, made in the Faroe Islands



EnvironmentalStation



OceanCable



OceanCamera



OceanLite



FeedingBarge



## Solving challenges since 1972

### Critical neighbourhood

Today, we have more than 20 staff members working at JT electric. Over the years, we have sold our unique, mission-critical products in more than 20 different countries.

Our motto is simple, but says it all: "... in safe hands".

Our vision is simple, yet straightforward: "We want to become the preferred supplier of electro-technical solutions."

Together with our competency and skills, our special facilities and tools, our constructive and critical customers, we are well positioned to become your preferred supplier, even though, and perhaps because, we are located in the heart of the harsh and demanding environment of the North Atlantic.

We are determined to take advantage of our unique situation and to make some of the world's best products for the aquaculture industry.

Being a preferred supplier for the aquaculture in the Faroe Islands, we have our share in the success the Faroese aquaculture has had over the last years.

# OceanCable

Impressive for more than 10 years



## Construction



Conductor: bare copper, flexible, according to EN 60228 class 5  
Insulation: EPR type EI 6 according to EN 50363-1

### Colour code:

3 cores



5 cores



### Common core covering:

extruded polyolefin compound (only applicable for cables > 6mm<sup>2</sup>)

### Outer sheath: Colour:

TMPU compound (Polyurethan) according to EN 50363-10-2 blue (~RAL 5015)

## Properties

- Halogen free
- Extreme mechanical resistance (Abrasion-, tearing-, notch-, pressure. and wear resistant)
- Good reversed bending strength (min. 3000 reversed bendings under load).
- Good chemical resistance (against fuels, oil, grease, chemicals, ..)
- Resistant against environmental factors (as ozone, UV, humidity, water, ..)
- Service temperature: -40 ... +90°C
- Minimum bending radius: 5xD.

## Table of dimensions

| Type                  | Nominal insulation thickness (mm) | Approximate Sheath thickness (mm) | Outer Ø (mm) | - Cable weight (kg/km) |
|-----------------------|-----------------------------------|-----------------------------------|--------------|------------------------|
| 3G2,5 mm <sup>2</sup> | 0,9                               | 2,4                               | 12,7 - 13,2  | 215                    |
| 5G2,5 mm <sup>2</sup> | 0,9                               | 2,6                               | 15,0 - 16,0  | 325                    |
| 5G6 mm <sup>2</sup>   | 1,0                               | 3,1                               | 19,5 - 21,0  | 385                    |
| 5G10 mm <sup>2</sup>  | 1,2                               | 4,0                               | 26,0 - 28,0  | 1.000                  |

# OceanLite



## Increase profitability and prevent maturation with OceanLite

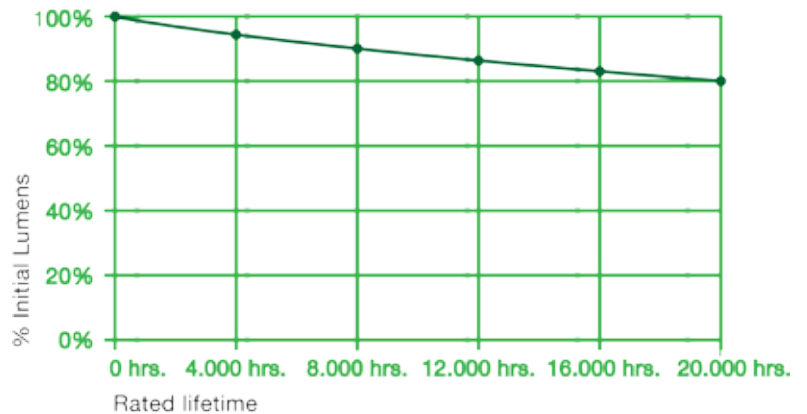
Applying OceanLite lights to farmed fish prevents maturation, enhances growth and feed digestion.

OceanLite underwater lights series are used in juvenile and smolts in tanks and salmon and cod cages in seawater and lakes.

The standard cable length is 40m special marine PUR cable, with options for shorter or longer versions to best fit the application.

- Less energy consumption and carbon footprint
- Service-life 4-5 photoperiodic seasons
- Higher intensity
- Scientifically tested results
- Increases growth
- Reduces maturation
- Better control with feeding etc.
- High colour temperature
- Comfortable electrical start
- Even and good light spreading

## Lumen Maintenance



## Number of photoperiodic seasons before bulb change

(Approx. 4000 hours per season, min. 80-85% intensity)



## Electrical Specifications

- Power: 365W
- Light Output: 34000 lm
- Bulb lifetime: 20000+ hrs.
- Lumen: 93 lm/W
- Color Temp.: 5000 K
- Color rendering (CRI): 90+
- Supply Voltage: 230 VAC, 50 Hz
- Operating Current: 3,2 A
- Control Gear: Mercury Built-in
- Special Marine Cable: 10-50m—3x2,5mm<sup>2</sup>
- Class: IP68

# Physical dimensions

- Size: 565x110mm (LxDia)
- Weight in air: 12,5 kg
- Weight in water: 5,0 kg approx.
- Glass: 5 mm Borosilica



## Conformity:

The light quality has an important factor in the biological part of the concept. JT has chosen the best bulb to fit this purpose.

With a color temperature up to 5200K, the light has a better capability to penetrate the water and it is believed that the fish is more sensitive to this end of the light spectra.



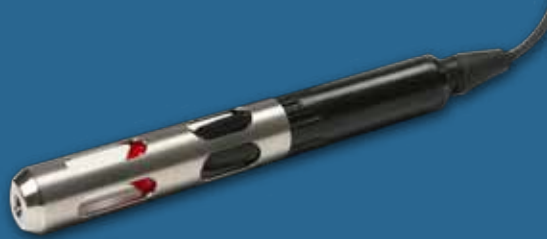
**XPW365 "eco"  
Integrated**



**XPV1000W  
For external box**

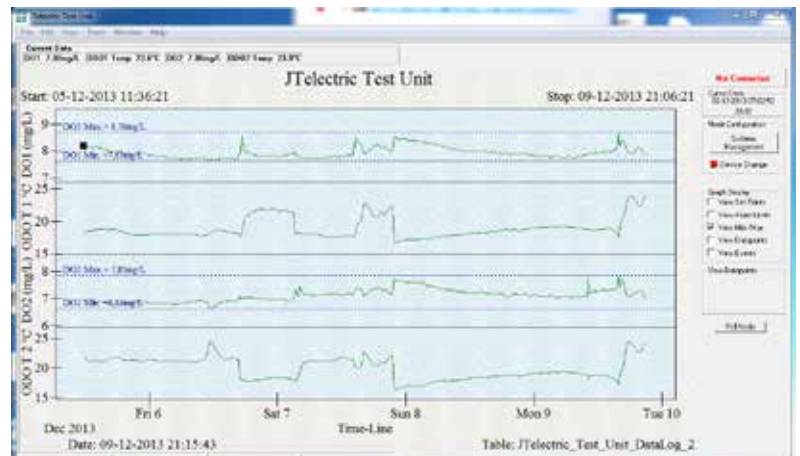
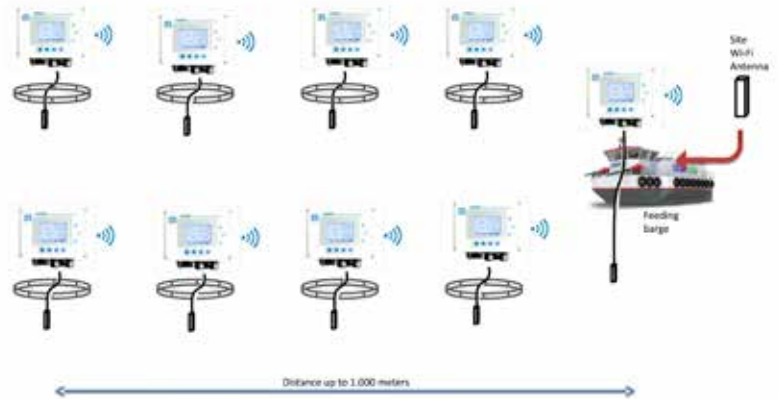


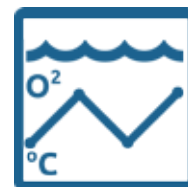
# Aquaculture Monitoring & Control Products



## Environmental Oxygen and Temperature Stations

Knowing gives you the control you want





Marine omni antenna made for the harsh environment

Double boxes keeping the electronics safe

Optional up to 4 probes running from one station

Power supply cable can be made any preferred length

Metal frame holder made of stainless steel can be delivered with custom made attachments to the barge or cage

Cable from station to each probe can be made any preferred length

# OceanCamera



## Rugged Camera for Harsh Environment

A very compact and light sensitive underwater television camera specially developed for monitoring fish feeding.

The camera view is automatically directed vertically towards the surface by a float jacket when the camera cable is tethered to the net base.

Feed pellets not eaten by the fish are clearly visible as they descend, and the special camera lens design prevents any feed and debris accumulation causing obscured vision.



+298 20 44 44



INFO@JT.FO



WWW.JT.FO





# Custom made 600 tons Feeding Barge

- High capacity (carry 600 tons of feed or more)
- Being suited for exposed sea (extremely good stability)
- Very long berth side (enabling feed- and work boats to safely lie alongside)
- Completely renovated inside and out (providing a safe and healthy working environment)
- High above average life expectancy due to steel thickness exceeding nowadays industry standards



## The Facts

|               |                              |
|---------------|------------------------------|
| Project Name  | Skarvhamar                   |
| Length        | 69,1 m                       |
| Width         | 9,5 m                        |
| Capacity      | 600 tons                     |
| Silos         | 8 (two hatches in each silo) |
| Feeding Lines | 8                            |

- Large fuel and water carriage capacity
- The ship maintains stability even if the feed is un-evenly distributed in the silos
- Spacious facilities including an engine room work shop, galley, shower room and laundry conveniences.



# The feeding system



Lighting in silos is standard, additional options include level control and cameras inside the silos

## The Bridge



With an excellent view over the barge and farm site.

## The Berth side



Starboard: the 40 meter long berth side allows even the largest feed boats to make berth safely alongside the feeding barge.

JT ELECTRIC  
KAMBSDALUR FO-530 FUGLAFJØRÐUR  
FAROE ISLANDS

☎ +298 20 44 44 ✉ INFO@JT.FO 🌐 WWW.JT.FO



**Innovative Solutions for the Aquaculture, made in the Faroe Islands**

